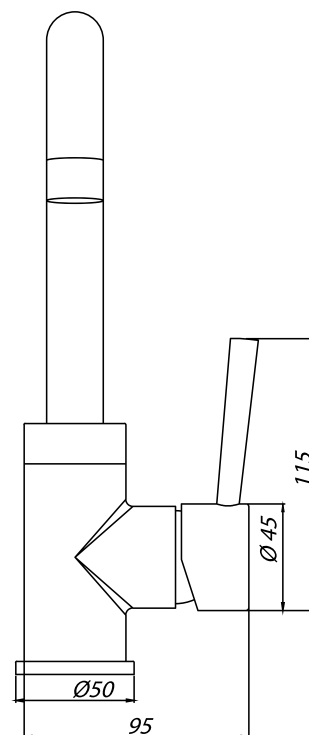
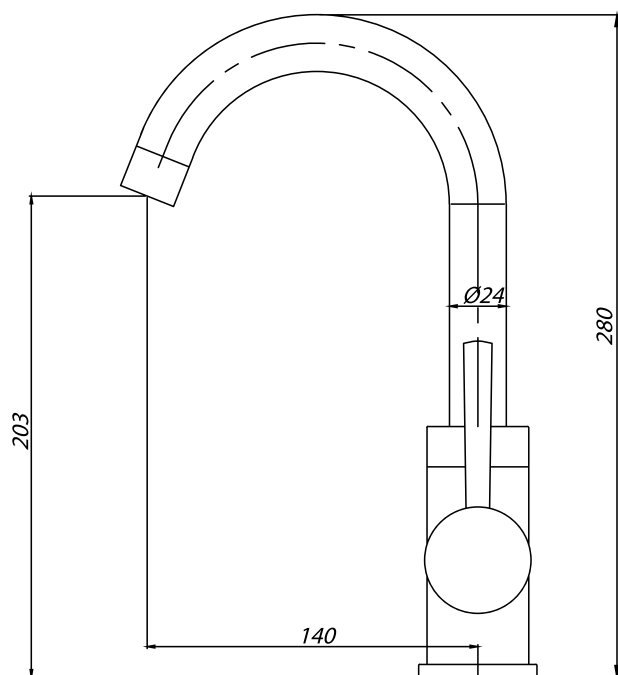
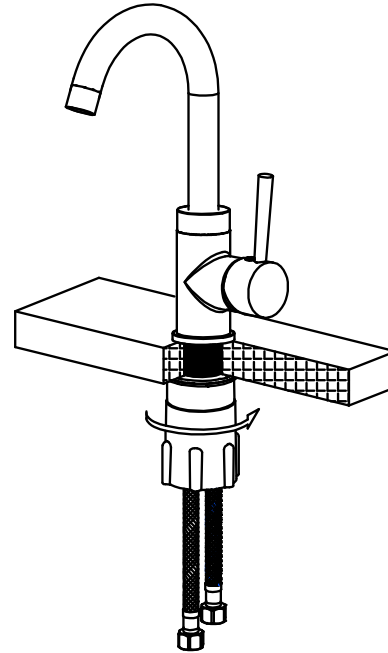
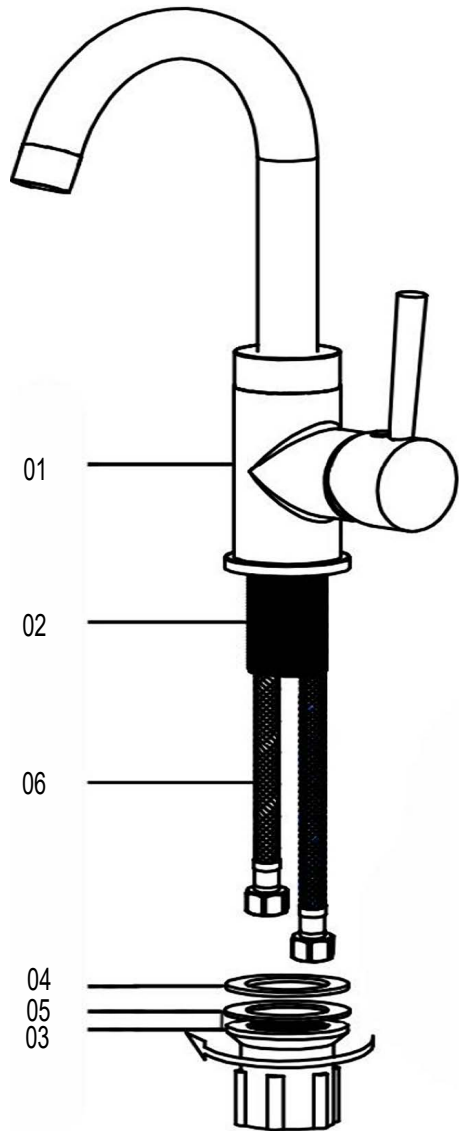




TECHNICAL DRAWING





Kitchen Mixer
Installation Manual
CR7820-5C/CR7820-5B
CR7820-5BC/CR7820-5BG
CR7820-5GG

Assembling parts:
1 x fixing part (01-05)
2 x fixing part (06)
Mounting instructions

- 1) Fix 2pcs flexibe hose(06) for water inlet onto the mixer body(01) .
- 2) Fix the mouting shank(02) onto the bottom of the mixer body (01) .
- 3) Put the mixer body(01) onto the table.
- 4) Put the rubber washer(04) and metal washer(05) onto the mouting shank(02) in sequence, then screw the mounting nut(03) onto the mouting shank(02) to fix the mixer body(01) .